

# Family History



**Hugh Dawson  
TATE**  
(1913–after 1982)

**&**

**Maud Elizabeth  
SCRUBY**  
(1876–1956)

**By Caroline Maskill**  
**February 2016**

## Contents

Tate family tree for Hugh Dawson Tate.....	3
Family tree for Maud Elizabeth Scruby.....	4
Maud's early life.....	5
Maud's marriage to Hugh Norton Tate .....	6
Birth of Hugh Dawson Tate .....	6
Death of Hugh Norton Tate .....	7
After Hugh Norton Tate's death .....	7
Maud and Hugh Dawson Tate migrate to Canada.....	10
Maud and Hugh Dawson Tate move to the United States .....	12
Hugh Dawson returns to England .....	12
Maud returns to England .....	13
What happened to Hugh Dawson Tate?.....	13
References and notes .....	14

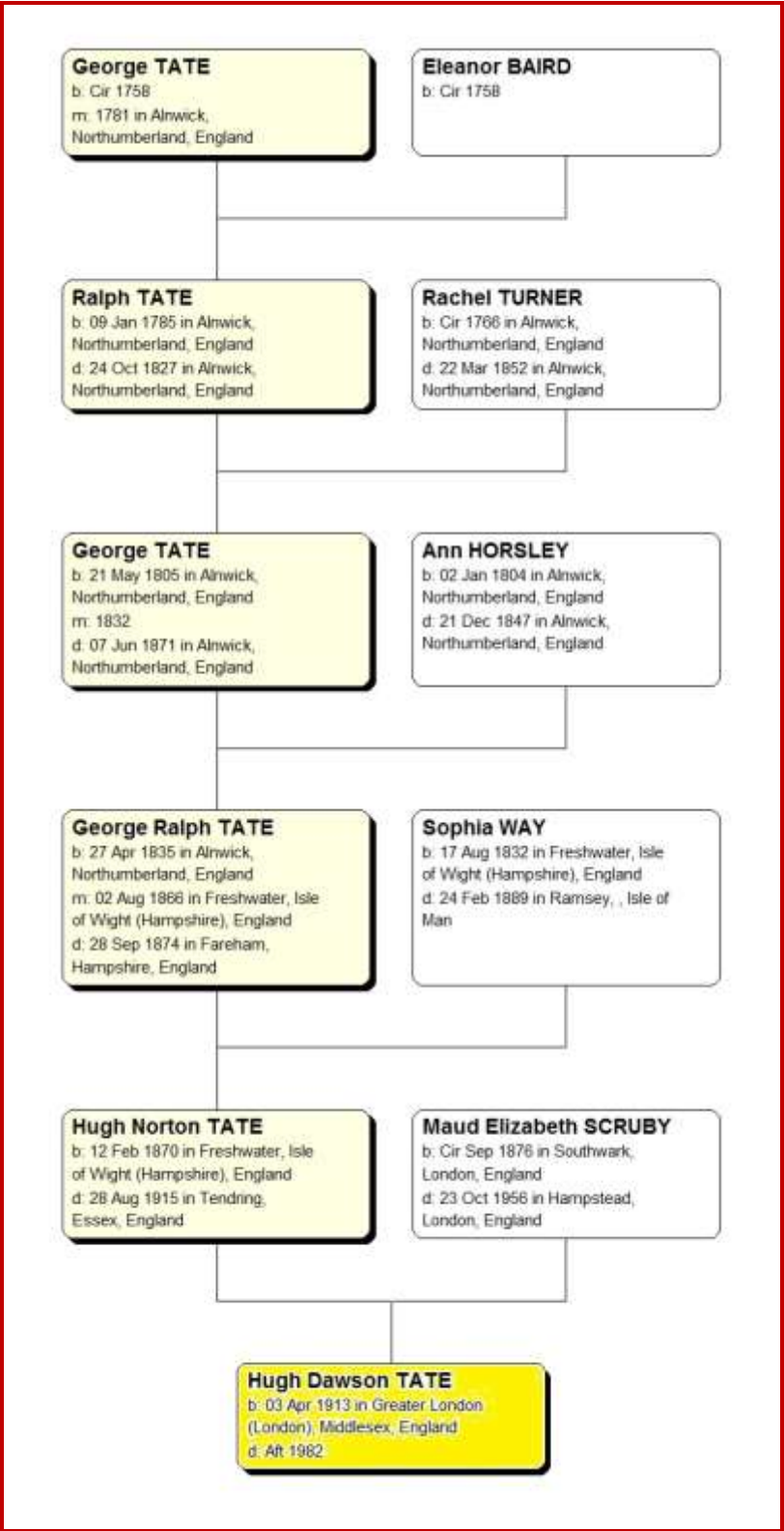
## Cover illustration

Maud Elizabeth Tate (née Scruby) and her son Hugh Norton Tate, probably in Mansfield, about 1920-1921 . From Maskill family photograph collection.

## Author's contact details

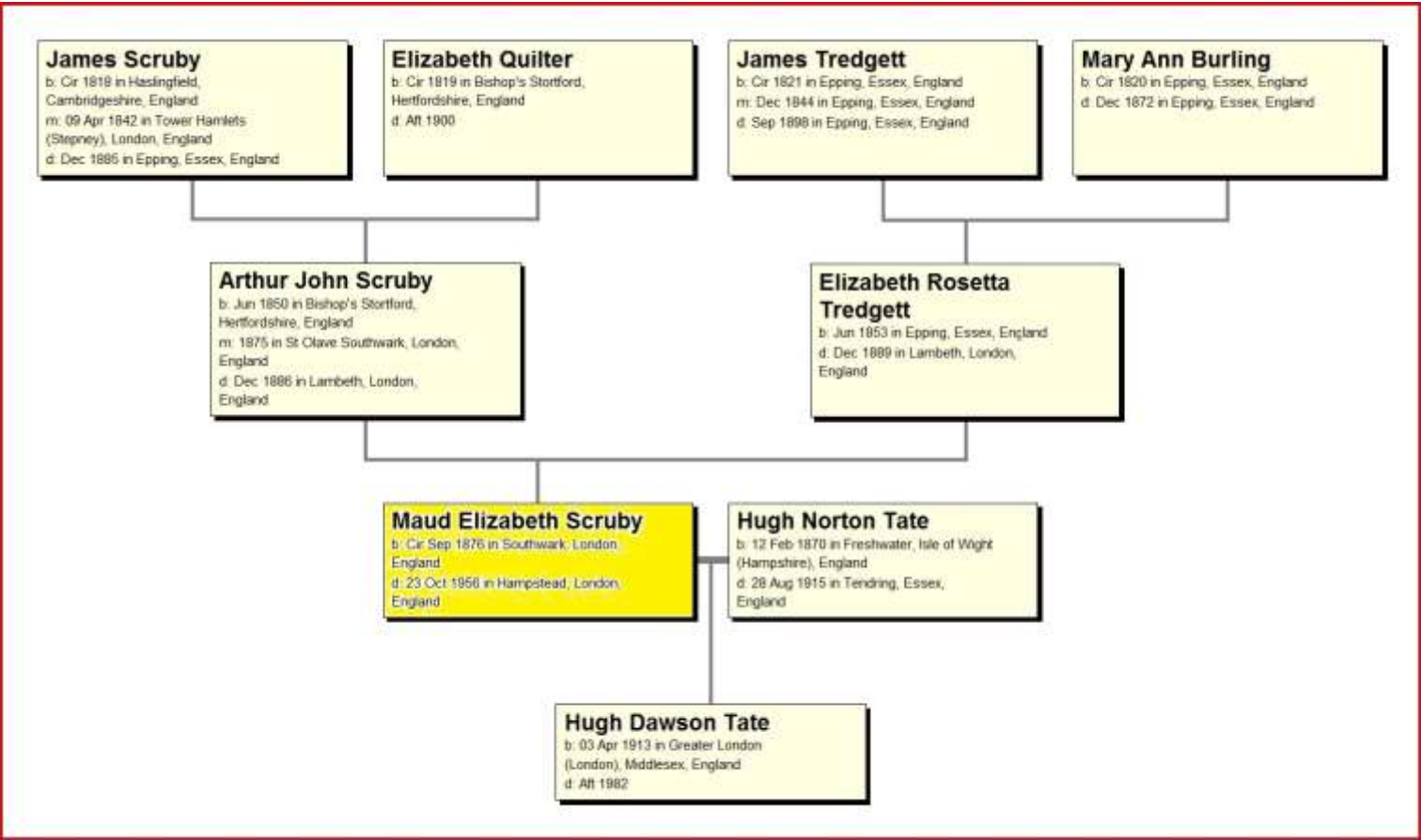
Caroline Maskill, PO Box 163-026, Lynfield, Auckland 1443, New Zealand  
[caroline.maskill@xtra.co.nz](mailto:caroline.maskill@xtra.co.nz)

Tate family tree for Hugh Dawson Tate



Source: Family tree by author

Family tree for Maud Elizabeth Scruby



Source: Family tree by author

## Maud's early life

Maud Elizabeth SCRUBY, a.k.a. Elizabeth Maud, was born (on 28 August?) in 1876 in Southwark, London.<sup>1,2</sup> She was the daughter of Arthur John SCRUBY (ironmonger) and Elizabeth Rosetta Scruby (née TREDGETT). Maud had a brother, James Stuart SCRUBY, who was about two years younger than her.<sup>3, 4</sup>

In 1881 the family lived at 74 Faraday Street, Newington (just north-west of the present-day Hopwood and Beaconsfield Roads, which at the time were parts of Westmoreland road).<sup>5</sup> Economically, most families in the immediate area were comfortably off, with 'good everyday earnings' (shown by the dark pink areas on the map below). However, fairly close by were more economically mixed areas (shown in brown) and poor areas (shown in grey/blue). Newington Workhouse was also nearby.

### 1898-99 map of Faraday Street, Newington, London



**Source:** Charles Booth Online Archive, Booth Poverty Map, London School of Economics and Political Science  
<http://booth.lse.ac.uk>

When Maud was about 10 (in 1886) her father died,<sup>6</sup> and then her mother died three years later in 1889.<sup>7</sup> In November of that year, perhaps after she became an orphan, Maud was baptised in St John the Divine Parish in Kennington. At the time she was living at 158 Wyndham Road in Camberwell.<sup>8</sup>



By 1891 Maud was boarding at Ivy Cottage girls' school in Dedham, Essex (Dedham is between Ipswich and Colchester).<sup>9</sup> Maybe Ivy Cottage charitably provided places for orphans, or maybe Maud got some kind of scholarship. Meanwhile Maud's brother James was an 'inmate' at King Edwards industrial home for destitute boys in Witley, Surrey.<sup>10</sup>

Maud must have done reasonably well at school because in 1901 she was working as a nurse in St Bartholomew's Hospital, London.<sup>11</sup>

### **St Bartholomew's Hospital, London**



**Source:** “Русский: Лондон” by Zzz04, Wikimedia Commons, under CC Attribution-Share alike 3.0 unported licence <https://commons.wikimedia.org/wiki/> (image has been cropped)

### **Maud's marriage to Hugh Norton Tate**

We do not know for certain how Maud met Hugh Norton TATE. She may well have been working in Nyasaland / Malawi as a nurse when they met one another. Although I have not been able to find an official record, it appears they were married in about 1905 (or at least between about 1905 and 1912), possibly in Africa.<sup>12</sup>

### **Birth of Hugh Dawson Tate**

The next official record of Maud I have found so far is her travelling with her husband Hugh Norton TATE, arriving on 14 December at Southampton, England on the ship 'Kenilworth Castle' from Durban, South Africa.<sup>13</sup>

Maud must have been pregnant on the voyage, as nearly four months later, 3 April 1913, their son Hugh Dawson TATE was born, in Islington, London.<sup>14, 15</sup> The choice of his middle name 'Dawson' is interesting as it was also the surname of Hugh Norton's brother-in-law William DAWSON (his sister Mabel Barbara's husband).

## Death of Hugh Norton Tate

After his son's birth, Hugh Norton returned to work in Nyasaland / Malawi, however he returned to England early in 1915.<sup>16</sup>

He then spent several months in England, but died in Clacton-on-Sea on Saturday 28 August 1915 at the age of 45 (Hugh Dawson was only two years old at the time).<sup>17</sup> He had committed suicide under a train.<sup>18, 19</sup>

## After Hugh Norton Tate's death

After her husband's death, Maud returned to Africa, working as a nurse / nursing sister in Nigeria. While she was there, her son Hugh Dawson went to live with my great-grandfather's (his uncle's) family in Mansfield, Nottinghamshire, England. We have photos of Hugh Dawson with the family there, and he looks about four to five years old in the earliest of these (i.e. he lived in Mansfield from about 1917 or earlier).

Hugh Dawson became a core member of the TATE family, and was treated just like the other children. They nicknamed him 'Tinker' because there was already another 'Hugh' in the family.

**Ralph Temple, Hugh Temple, and Hugh Dawson Tate (Tinker), Mansfield, about 1917–1918**



**Source:** Maskill family photograph collection

**Notes:**

Ralph	Hugh	Tinker
-------	------	--------

**Mansfield Tate family with Hugh Dawson Tate (Tinker), about 1916–1917**



**Source:** Maskill family photograph collection

**Notes:** Janet Rhona Temple Ralph  
Donald Hugh Tinker  
Sylvia



**Mansfield Tate family with Hugh Dawson Tate (Tinker), about 1917–1918**



**Source:** Maskill family photograph collection

**Notes:**

	Janet	Rhona	Temple
Donald	Sylvia	Hugh	Ralph
			Tinker

Hugh Dawson's mother Maud returned from Nigeria for at least two visits to England in 1917 and in 1919.<sup>20, 21</sup>

The photograph of Hugh Dawson and Maud (next page) is likely to have been taken towards the end of Hugh Dawson's stay with the Mansfield TATE family in about 1920–21.

**Maud Elizabeth and Hugh Dawson Tate, probably in Mansfield, about 1920-1921**

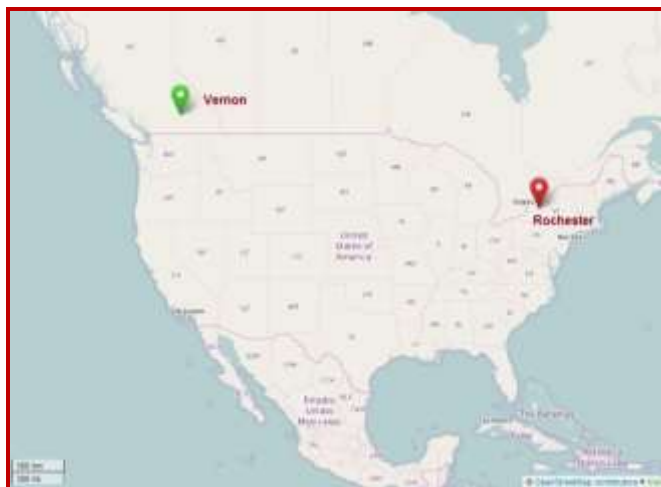


**Source:** Maskill family photograph collection

### **Maud and Hugh Dawson Tate migrate to Canada**

Soon after this, Maud decided to leave England again, this time to go to Canada with her son. At this time they were living at 5 Arundel Street, Kemp Town, Brighton - presumably they moved there after Maud returned from Nigeria. Maud and Hugh Dawson left from Liverpool on the ship 'Melita' on 15 May 1921 and disembarked at Quebec on 22 May.<sup>22, 23</sup> Then they travelled west across Canada, at least partly by rail, to Vernon, British Columbia. Their destination was the Grange Hotel, a boarding house, which Maud intended to help run with her friend, Mrs. MARSDEN.<sup>24</sup>

### Map of Canada and the United States



**Source:** © OpenStreetMap contributors, licensed as CC BY-SA 2.0, [www.openstreetmap.org](http://www.openstreetmap.org). Vernon and Rochester labels by author.

### Ship Melita



**Source:** Passenger ship website  
<http://www.simplonpc.co.uk/CP3.html#anchor228201>

In fact, Maud bought a half interest in the Grange Hotel and was the part-owner in 1921, along with Mrs. L. Marsden who previously had been the sole owner. The Grange Hotel was built in about 1908 and was located on Mara Avenue across from the Vernon Court House at the edge of the downtown area (the current address is 3002 - 27th Street).<sup>25</sup>

### The Grange Hotel, Vernon, about 1910



**Source:** Image courtesy Vernon Museum and Archives – Photo No. 10372

**Note:** This photo should not be reproduced or published, including on any other website, without permission from the Vernon Museum and Archives (due to copyright agreement).

In 1910, Mrs. MARSDEN, had been advertising an accommodation rate of 50 cents per night for 'transients'. Vernon city assessment records show that Mrs. MARSDEN was again the sole owner of the Grange Hotel from 1924 until 1932. After this the Grange continued to function as a boarding house, but in 1968 / 69 it was demolished to make space for a civic park named the Justice Court Park.<sup>26</sup>

### **Maud and Hugh Dawson Tate move to the United States**

Presumably things did not work out in Vernon, or other opportunities arose, and 15 months later Maud and Hugh Dawson were on the move again, this time to the United States. Records show they left Canada on the ship 'Andania', and in August 1922 entered the United States at Buffalo, New York.<sup>27</sup>

The 1924 city directory for Rochester, New York state, locates Maud on 18 Avenue E.<sup>28</sup> In 1925 Maud (occupation, nurse) and Hugh (school student) were lodging / boarding with Charlotte Cunningham and her two sons at 255 River Street, Rochester.<sup>29, 30</sup>

By the 1930 US census Maud and Hugh Dawson were living at 69 Seneca Parkway, Rochester, along with a 'roomer' Alice Cane. Maud was working as an insurance company nurse and Alice was also a nurse. Hugh was recorded as having no occupation at this time (he was 17).<sup>31</sup>

Looking at later Rochester city directories, in 1930 and 1931 Maud was living at 69 Seneca Parkway (as in the census). The next year she was at 576 Flower City Park, and in 1934, 1935 and 1936 she was working at '277 Alexander [Street] rm 210h'. In 1934 she was living at 71 Primrose; and in 1935 and 1936 both Maud and Hugh (student) were living at 101 Pullman Avenue. However, the 1937 Rochester city directory states that Hugh Dawson had left for England and Maud had gone to Jersey City, New Jersey. Maud is identified as the widow of Hugh Tate in all but one of these city directory entries.<sup>32</sup>

### **Hugh Dawson returns to England**

At the age of 22, Hugh Dawson Tate returned to England (without Maud) from New York on the ship 'MV Georgic', arriving on 16 September 1935. Now Hugh described himself as a student and his intended address was 54 Boileau Road, Ealing, London.<sup>33</sup> Electoral records show he was still at this address in 1936 – also living there were William Marsden Eastman and Margaret Ellen Eastman.<sup>34</sup>

In 1939, at the beginning of World War II, the British government registered everyone for military conscription purposes and for issuing identification cards and ration books. At this time, Hugh Dawson Tate was a travelling actor living in the household of Margaret Halladay, a widow and travelling writer (b 1894). Their address was 45 Park Crescent Mews, St. Marylebone, London, which is next to the famous Harley Street, and very near to Regent's Park.<sup>35, 36</sup>

Slightly later, from 1943–1964, according to London telephone directories and electoral rolls, Hugh Dawson lived at 23 Belsize Crescent, Hampstead, London NW3.<sup>37, 38</sup> He also spent some of 1945 in the King George V Sanatorium, Godalming, Guildford, Surrey, which treated people with tuberculosis – TB.<sup>39</sup> Apparently he had a successful lung operation for the disease around this time.<sup>40</sup>

## Maud returns to England

Sometime between 1936–7 and 1945 Maud returned to England. From 1945 to 1956 Maud lived with her son Hugh Dawson at 23 Belsize Crescent, Hampstead, London NW3.<sup>41</sup>

However, in late 1956 Maud died at the age of 80.<sup>42</sup> Her probate record reads:

‘**TATE** Maud Elizabeth of 23 Belsize-crescent Hampstead **London** widow died 23 October 1956 Administration (with Will) **London** to Hugh Dawson Tate civil servant. Effects £223 9s 6d.’<sup>43</sup>

## What happened to Hugh Dawson Tate?

As far as we know, Hugh Dawson never married or had any children.

According to family stories he worked in repertory theatres in the south-west of England (possibly Bath or Cheltenham) and was last seen out walking his Siamese cat.<sup>44</sup>

Apparently Hugh Dawson kept in touch with my great-grandmother (Janet TATE) until about the mid-1960s when he stopped corresponding with her. When Janet died in 1971 the family were unable to find him, despite employing a detective.<sup>45</sup>

However, recently I have found the following Somerset addresses for Hugh Dawson in British telephone books:

1977, Hugh Tate, 94 Sydney Place, Bath <sup>46</sup>

1978, Hugh Tate, 94 Sydney Place, Bath <sup>47</sup>

1980, HD Tate, 94 Sydney Place, Bath <sup>48</sup>

1982, Hugh Tate, 59 Church Road, Combe Down <sup>49</sup>

1983, Hugh Tate, 59 Church Road, Combe Down. <sup>50</sup>

But currently, what eventually happened to Hugh Dawson Tate remains a mystery.



## References and notes

- <sup>1</sup> *England and Wales Free BMD Birth Index, 1837–1915*. Year: 1876; Quarter of Registration: Jul-Aug-Sep; District: St Saviour Southwark; Volume 1d; Page: 160. (From Ancestry.com online database). Subsequent records suggest slightly different birth years for Maud, due to some inconsistency in the reporting of her age.
- <sup>2</sup> Janet (Granny) Tate's birthday book has a 'Maud' recorded on 28 August (the entry has been crossed out).
- <sup>3</sup> Ancestry.com and The Church of Jesus Christ of Latter-day Saints. *1881 England Census* [database on-line]. Provo, UT, USA: Ancestry.com Operations Inc, 2004. Class: RG11; Piece: 546; Folio: 48; Page: 23.
- <sup>4</sup> *England and Wales Free BMD Birth Index, 1837–1915*. Year: 1878; Quarter of Registration: Jan-Feb-Mar; District: St Saviour Southwark; Volume 1d; Page: 151.
- <sup>5</sup> See note 3.
- <sup>6</sup> Ancestry, "England and Wales, Free BMD Death Index: 1837-1915," database, *Ancestry* (www.ancestry.com.au : accessed 6 Mar 2016), Entry for 1886 death of Arthur John Scruby; Oct-Dec Q, Volume 1d, page 296.
- <sup>7</sup> Ancestry, "England and Wales, Free BMD Death Index: 1837-1915," database, *Ancestry* (www.ancestry.com.au : accessed 6 Mar 2016), Entry for 1889 death of Elizabeth Scruby; Oct-Dec Q, Volume 1d, page 271.
- <sup>8</sup> Ancestry, "London, England, Church of England Births and Baptisms 1813-1906," database, *Ancestry*, *Ancestry* (www.ancestry.com.au : accessed 7 Mar 2016), Entry for Maude Elizabeth Scruby's 1889 baptism; Kennington St John the Divine, Lambeth.
- <sup>9</sup> Ancestry, "1891 England Census," database, *Ancestry*, *Ancestry* (www.ancestry.com.au : accessed 4 Mar 2016), entry for Maud E Scruby, Dedham, Essex, England; Piece 1417, folio 8, page 6.
- <sup>10</sup> Ancestry, "1891 England Census," database, *Ancestry*, *Ancestry* (www.ancestry.com.au : accessed 4 Mar 2016), entry for James S Scruby, Witley, Surrey, England; Piece 562, folio 111, page 8.
- <sup>11</sup> Ancestry.com. *1901 England Census* [database on-line]. Provo, UT, USA: Ancestry.com Operations Inc, 2005. Class: RG13; Piece: 264; Folio: 175; Page: 12.
- <sup>12</sup> According to US census records, Maud was first married at the age of 29. *1930 US Federal Census*. Rochester, Monroe, New York. Roll: 1450; Page: 21A EN52; Image: 413.0. (From Ancestry.com online database). If Hugh Norton TATE was Maud's first husband, this means they were married in about 1905.
- <sup>13</sup> *UK Incoming Passenger Lists, 1878–1960*. On this record, Maud is listed as Elizabeth TATE. (From Ancestry.com online database)
- <sup>14</sup> Ancestry, "England & Wales, Free BMD Birth Index, 1837-1915," database, *Ancestry* (www.ancestry.com.au : accessed 8 Feb 2016), Entry for Hugh D Tate's 1913 birth; Apr-Jun Q, Volume 1b, page 360. Rec. Date: 6 Mar 2016 We know Maud's maiden name was 'Scruby' from this birth record.
- <sup>15</sup> Janet (Granny) Tate has an entry for 'Hugh Dawson Tate' on 3 April in her birthday book.
- <sup>16</sup> *UK Incoming Passenger Lists, 1878–1960*. (From Ancestry.com online database)
- <sup>17</sup> *England and Wales Free BMD Death Index, 1837–1983*. Year: 1915; Quarter of Registration: Jul-Aug-Sep; District: Tendring; County: Essex; Volume: 4a; Page: 647. (From Ancestry.com online database)
- <sup>18</sup> Certified copy of an entry of death, GRO. Registration District Tendring, Sub-District of Clacton, County of Essex. Certificate no 163753, issued 6 December 2011.
- <sup>19</sup> *Essex Chronicle*, 3 September 1915, page no. unknown.
- <sup>20</sup> *UK Incoming Passenger Lists, 1878–1960*. 1<sup>st</sup> class passenger on the ship 'Karina' from Lagos to Liverpool, arriving 24 May 1917. (From Ancestry.com online database)

- <sup>21</sup> *UK Incoming Passenger Lists, 1878–1960*. 1<sup>st</sup> class passenger on the ship ‘Mandingo’ from Lagos to Liverpool, arriving 13 February 1919. (From Ancestry.com online database)
- <sup>22</sup> *Canadian Passenger Lists 1865–1935*. (From Ancestry.com online database)
- <sup>23</sup> Ancestry, "UK, Outward Passenger Lists, 1890-1960," database, *Ancestry* (www.ancestry.com.au : accessed 19 Aug 2013), Entry for Mrs M Tate and Mstr H Tate; From Liverpool to Montreal, ship Melita (Canadian Pacific Railway line), departure 15 May 1921, contract ticket no. 28730.
- <sup>24</sup> *Canada, Ocean Arrivals (Form 30A) 1919–1924*. Individual Manifest Rolls T-14939 through T-15248. (From Ancestry.com online database)
- <sup>25</sup> Personal communication from Barbara Bell, Archivist, Greater Vernon Museum and Archives, 21 June 2011.
- <sup>26</sup> See previous endnote.
- <sup>27</sup> *Border Crossings from Canada to US*. 1895–1956. Passengers arriving at St Albans, VT District, through Canadian Pacific and Atlantic Ports, 1895-1954, Record Group: 85; Records of the Immigration and Naturalization Service; Microfilm Serial M1464; Microfilm Roll: 443; Line 4. (From Ancestry.com online database)
- <sup>28</sup> *US City Directories 1821–1989*. Rochester, New York. (From Ancestry.com online database)
- <sup>29</sup> New York State Archives, Albany, *New York; State Population Census Schedules, 1925*; Election District 02, Assembly District 04, City Rochester Ward 23, County Monroe, Page 11, Line 25.
- <sup>30</sup> New York State Archives, Albany, *New York; State Population Census Schedules, 1925*; Election District 02, Assembly District 04, City Rochester Ward 23, County Monroe, Page 14, Line 21.
- <sup>31</sup> See footnote 12.
- <sup>32</sup> *US City Directories 1821–1989*. Rochester, New York. (From Ancestry.com online database)
- <sup>33</sup> *UK Incoming Passenger Lists, 1878–1960*. (From Ancestry.com online database). He mis-spelt the name of the street as ‘Berleau’.
- <sup>34</sup> *London, England Electoral Registers 1832–1965*. 1936 Ealing electorate list Page 13 (From Ancestry.com online database).
- <sup>35</sup> 1939 Register, England, series RG101, piece 0456G, image 007, line 11, 45 Park Crescent Mews, St. Marylebone, London, Hugh D Tate. Rec. Date: 13 Mar 2016. (Letter code ARAA, schedule no 112, schedule sub no. 3)
- <sup>36</sup> There was also another member of the household, probably a child, whose details are not yet available (there are restrictions on releasing information for people born less than 100 years ago).
- <sup>37</sup> *British Phone Books, 1880–1994*. (From Ancestry.com online database).
- <sup>38</sup> *London, England Electoral Registers 1832–1965*. Hampstead electorate lists (From Ancestry.com online database).
- <sup>39</sup> *London, England Electoral Registers 1832–1945*. October 1945 (Volume 2) Guildford electorate list Page 9 (From Ancestry.com online database). Entry for Hugh D. Tate. (Hugh’s cousins Ralph and Malcolm Tate also experienced TB).
- <sup>40</sup> Elizabeth Anne Maskill. 1999. Family History: Bingleys, Tates, Maskills. Auckland NZ: Unpublished (handwritten notes).
- <sup>41</sup> *London, England Electoral Registers 1832–1965*. Hampstead electorate lists (From Ancestry.com online database).
- <sup>42</sup> *England and Wales Death Index 1916–2005*. Death Registration October–December 1956; Registration District: Hampstead; Inferred County: London; Volume 5c; Page 788. (From Ancestry.com online database).
- <sup>43</sup> Ancestry.com. England & Wales, National Probate Calendar (Index of Wills and Administrations), 1858-1966 [database on-line]. Provo, UT, USA: Ancestry.com Operations Inc, 2010. 1957, Page 692.
- <sup>44</sup> Elizabeth Anne Maskill. 1999. Family History: Bingleys, Tates, Maskills. Auckland NZ: Unpublished (handwritten notes).

<sup>45</sup> See previous endnote.

<sup>46</sup> Ancestry, "British Phone Books, 1880-1984," database, Ancestry ([www.ancestry.com.au](http://www.ancestry.com.au) : accessed 13 Mar 2016), Entry for Hugh Tate; 1977, Bristol Jul.

<sup>47</sup> Ancestry, "British Phone Books, 1880-1984," database, Ancestry ([www.ancestry.com.au](http://www.ancestry.com.au) : accessed 13 Mar 2016), Entry for Hugh Tate; 1978, Bristol Dec.

<sup>48</sup> Ancestry, "British Phone Books, 1880-1984," database, Ancestry ([www.ancestry.com.au](http://www.ancestry.com.au) : accessed 13 Mar 2016), Entry for HD Tate; 1980, Bath / West Wiltshire, Sep.

<sup>49</sup> Ancestry, "British Phone Books, 1880-1984," database, Ancestry ([www.ancestry.com.au](http://www.ancestry.com.au) : accessed 13 Mar 2016), Entry for Hugh Tate; 1982, Bath / West Wiltshire, Jun.

<sup>50</sup> Ancestry, "British Phone Books, 1880-1984," database, Ancestry ([www.ancestry.com.au](http://www.ancestry.com.au) : accessed 13 Mar 2016), Entry for Hugh Tate; 1983, Bath / West Wiltshire, Dec.